

Sample Pages

Intermediate Trombone Method, Vol. 1 by Brian Kay

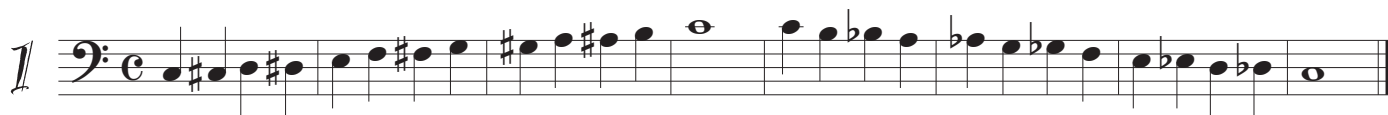
Contents

- Lesson Group 1 (of 12) – Review level
- Lesson Group 4
- Lesson Group 10
- Rhythm Supplements 1-3 (of 12)
- Rhythm Supplements 10-12

This material from Brian Kay's Intermediate Trombone Method is copyright, but these pages may be freely distributed and shared as samples. Order your digital or print copy at www.BrassStages.com

GROUP 1

C Chromatic Scale



A \flat Major Scale and Thirds



Bach Minuet



America, The Beautiful



Question: Are you ready for some hard work and fun?

Frere Jacques

5

mp

Two staves of music in bass clef, 2/4 time, B-flat major. The first staff starts with a dynamic marking of *mp*. The melody consists of eighth notes with slurs over groups of four notes.

London Bridges Variation

6

f *p* *f* *p* *mf*

f *pp*

Two staves of music in bass clef, 2/4 time, B-flat major. The first staff includes dynamic markings *f*, *p*, *f*, *p*, and *mf*. The second staff includes a dynamic marking of *f pp* with a hairpin indicating a crescendo.

Blues Jam

7

Two staves of music in bass clef, 2/4 time, B-flat major. The first staff begins with a 7-measure rest. The music features a bluesy feel with slurs and ties.

Practice Record

GROUP 4

G Major Scale with Thirds

1

Simple Gifts

2

Hava Nagila

3

Rhosymedre

Two staves of music in bass clef, key signature of three flats (B-flat, E-flat, A-flat), and common time (C). The first staff begins with a treble clef and a '4' indicating the starting finger. The music consists of eighth-note runs with slurs and accents, ending with a double bar line.

6/8 Scale Study

Two staves of music in bass clef, key signature of three flats, and 6/8 time. The first staff begins with a treble clef and a '5' indicating the starting finger. The music features eighth-note and quarter-note patterns with slurs and accents, ending with a double bar line.

Syncopated Scale Study

Two staves of music in bass clef, key signature of three flats, and common time. The first staff begins with a treble clef. The music features eighth-note patterns with slurs and accents, ending with a double bar line.

Da Blues

One staff of music in bass clef, key signature of three flats, and common time. The music features eighth-note patterns with slurs and accents, ending with a double bar line.

Practice Record

For creativity: Pick one of these pieces and see how many different ways you can play it (tempo, dynamics, articulation, style, etc.).

GROUP 10

Scale Buster

1

f

Musical notation for 'Scale Buster' in bass clef, 6/8 time signature, starting with a forte (*f*) dynamic. The piece consists of a single line of music with a series of eighth-note runs.

The Ride of the Valkyries

Richard Wagner

2

f

Musical notation for 'The Ride of the Valkyries' in bass clef, 9/8 time signature, starting with a forte (*f*) dynamic. The piece consists of four lines of music, featuring a rhythmic pattern of eighth and sixteenth notes with accents and slurs.

Sailing, Sailing

3

mf

Musical notation for 'Sailing, Sailing' in bass clef, 6/8 time signature, starting with a mezzo-forte (*mf*) dynamic. The piece consists of two lines of music, featuring a rhythmic pattern of eighth and sixteenth notes with slurs and accents.

Question: What question will you ask yourself today?

Come Thou Fount

Musical score for 'Come Thou Fount' in bass clef, 3/4 time, key of B-flat. The score consists of three staves. The first staff begins with a *mf* dynamic. The second staff features a crescendo leading to a *f* dynamic. The third staff begins with a *mf* dynamic. The piece concludes with a double bar line.

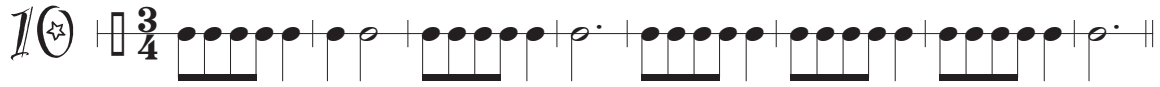
Vive la Canadienne


Musical score for 'Vive la Canadienne' in bass clef, 2/4 time, key of B-flat. The tempo is marked *Allegro*. The score consists of three staves, all beginning with a *mf* dynamic. The piece concludes with a double bar line.

Triple Blue

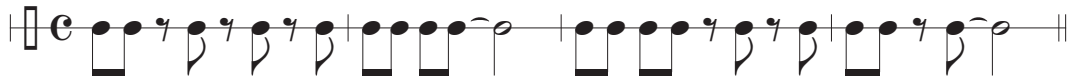
Musical score for 'Triple Blue' in bass clef, common time, key of B-flat. The tempo is marked *swing*. The score consists of one staff. The first four measures are marked with '3' and a bracket, indicating triplets. The piece concludes with a double bar line.

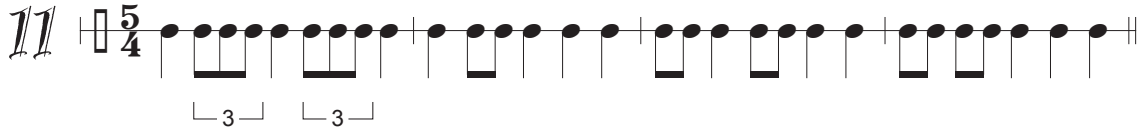
Practice Record

10 



Swing

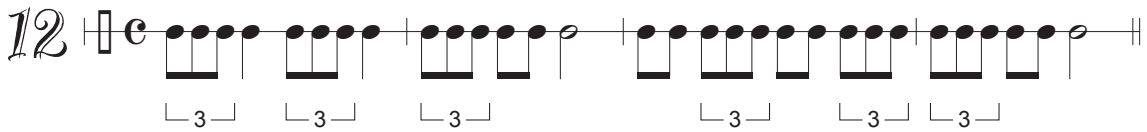


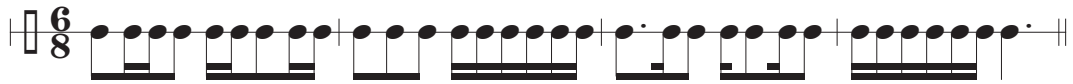
11 



Swing



12 



Swing

