

## Sample Pages

### Intermediate Euphonium Method, Vol. 1 by Brian Kay

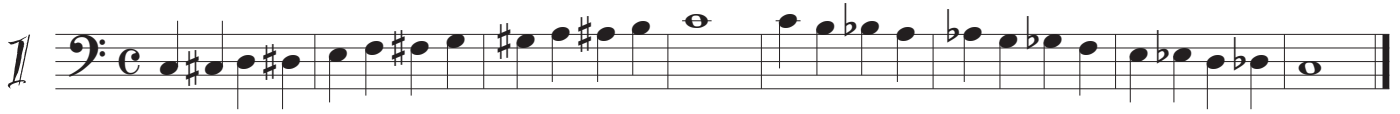
#### Contents

- Lesson Group 1 (of 12) – Review level
- Lesson Group 4
- Lesson Group 10
- Rhythm Supplements 1-3 (of 12)
- Rhythm Supplements 10-12

This material from Brian Kay's Intermediate Euphonium Method is copyright, but these pages may be freely distributed and shared as samples. Order your digital or print copy at [www.BrassStages.com](http://www.BrassStages.com)

# GROUP 1

## C Chromatic Scale



## A $\flat$ Major Scale and Thirds



## Bach Minuet



## America, The Beautiful



*Question: Are you ready for some hard work and fun?*

### Frere Jacques

Two staves of music for Frere Jacques. The first staff is in bass clef with a 5/4 time signature and a mezzo-piano (*mp*) dynamic. The second staff continues the melody. The music is in B-flat major and common time.

### London Bridges Variation

Two staves of music for London Bridges Variation. The first staff is in bass clef with a common time signature and dynamic markings of *f*, *p*, *f*, *p*, and *mf*. The second staff continues the melody with a dynamic marking of *f pp*. The music is in B-flat major and common time.

### Blues Jam

Two staves of music for Blues Jam. The first staff is in bass clef with a 7/8 time signature. The second staff continues the melody. The music is in B-flat major and 7/8 time.

### Practice Record


# GROUP 4

## G Major Scale with Thirds

1

## Simple Gifts

2

## Hava Nagila

3

### Rhosymedre

Two staves of musical notation for the piece 'Rhosymedre'. The first staff begins with a treble clef, a key signature of three flats (B-flat, E-flat, A-flat), and a common time signature (C). The melody consists of eighth notes with slurs, moving in a stepwise fashion across the staff. The second staff continues the melody, also in eighth notes with slurs, and ends with a double bar line.

### 6/8 Scale Study

Two staves of musical notation for the '6/8 Scale Study'. The first staff begins with a treble clef, a key signature of three flats, and a 6/8 time signature. The melody is composed of eighth notes, some beamed together, and quarter notes. The second staff continues the scale study, ending with a double bar line.

### Syncopated Scale Study

Two staves of musical notation for the 'Syncopated Scale Study'. The first staff begins with a treble clef, a key signature of three flats, and a common time signature. The melody features syncopated rhythms with eighth and quarter notes. The second staff continues the study, ending with a double bar line.

### Da Blues

One staff of musical notation for the piece 'Da Blues'. It begins with a treble clef, a key signature of three flats, and a common time signature. The melody is characterized by a bluesy feel with slurs and a double bar line at the end.

### Practice Record


*For creativity: Pick one of these pieces and see how many different ways you can play it (tempo, dynamics, articulation, style, etc.).*

# GROUP 10

## Scale Buster

1

*f*

Musical notation for 'Scale Buster' in bass clef, 6/8 time signature, starting with a forte (*f*) dynamic. The piece consists of a single line of music with a series of eighth and sixteenth notes.

## The Ride of the Valkyries

Richard Wagner

2

*f*

Musical notation for 'The Ride of the Valkyries' in bass clef, 9/8 time signature, starting with a forte (*f*) dynamic. The piece consists of four lines of music with various rhythmic patterns and accents.

## Sailing, Sailing

3

*mf*

Musical notation for 'Sailing, Sailing' in bass clef, 6/8 time signature, starting with a mezzo-forte (*mf*) dynamic. The piece consists of two lines of music with a steady eighth-note rhythm.

*Question: What question will you ask yourself today?*

### Come Thou Fount

Musical score for 'Come Thou Fount' in bass clef, 3/4 time, key of B-flat. The score consists of three staves. The first staff begins with a *mf* dynamic. The second staff features a crescendo leading to a *f* dynamic. The third staff begins with a *mf* dynamic. The music is characterized by flowing eighth and sixteenth notes with various phrasing slurs.

### Vive la Canadienne

Musical score for 'Vive la Canadienne' in bass clef, 2/4 time, key of B-flat. The tempo is marked *Allegro*. The score consists of four staves, all beginning with a *mf* dynamic. The music is a rhythmic and energetic piece featuring eighth and sixteenth notes with frequent accents.

### Triple Blue

Musical score for 'Triple Blue' in bass clef, common time, key of B-flat. The tempo is marked *swing*. The score consists of one staff. The music features a series of eighth notes with a triplet feel. Below the staff, there are four bracketed groups of three eighth notes, each labeled with a '3' to indicate triplets.

### Practice Record


# Rhythm Supplement

Write in the counting, then sing the rhythm while you tap or clap the beat.

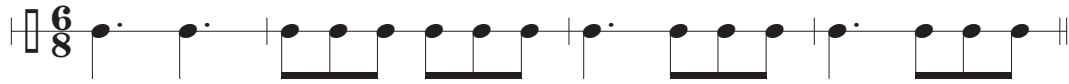
1 



*Swing*

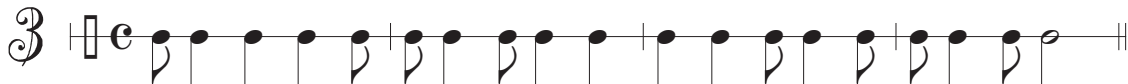


2 



*Swing*



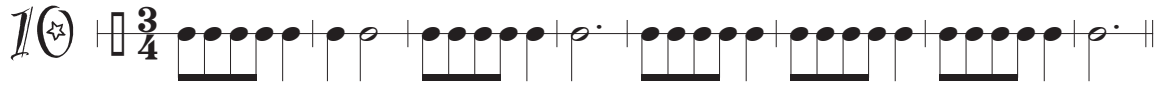
3 



*Swing*

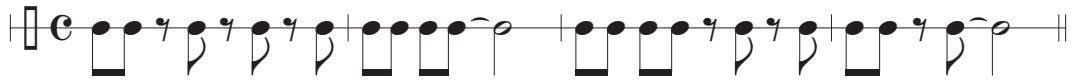


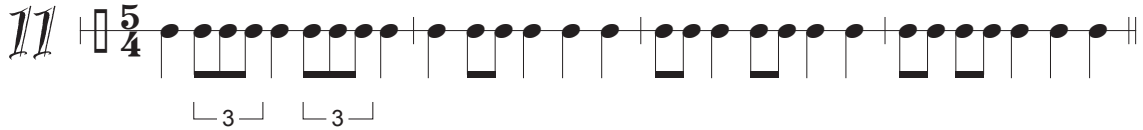


10 



Swing

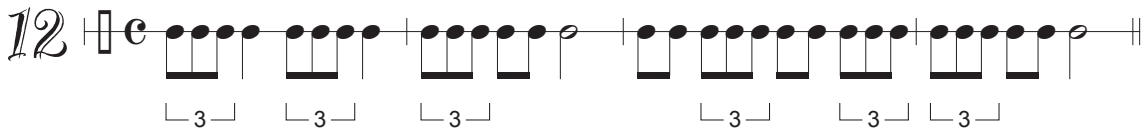


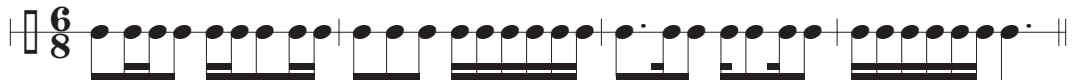
11 



Swing



12 



Swing

