

Sample Pages

Intermediate Trumpet Method, Vol. 1 by Brian Kay

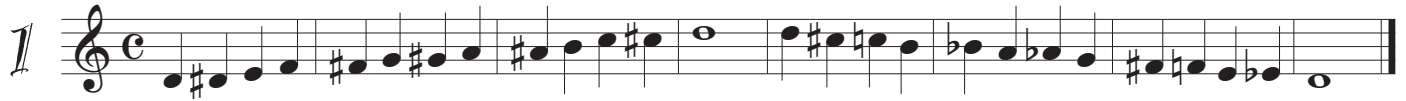
Contents

- Lesson Group 1 (of 12) – Review level
- Lesson Group 4
- Lesson Group 10
- Rhythm Supplements 1-3 (of 12)
- Rhythm Supplements 10-12

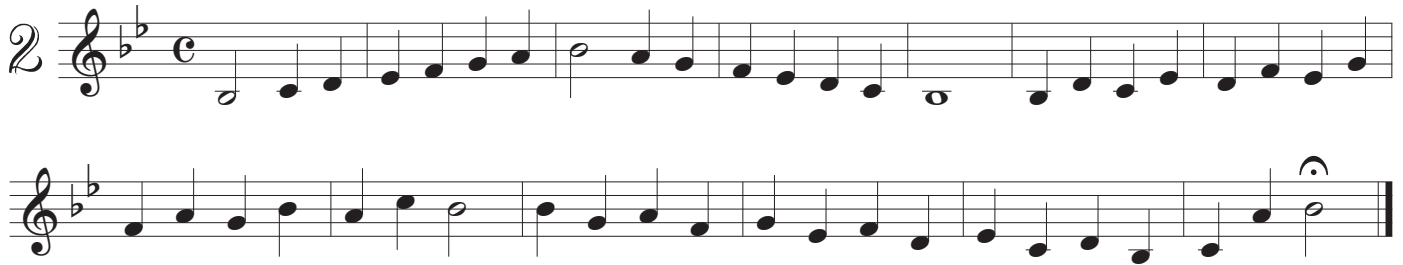
This material from Brian Kay's Intermediate Trumpet Method is copyright, but these pages may be freely distributed and shared as samples. Order your digital or print copy at www.BrassStages.com

GROUP 1

D Chromatic Scale



Bb Major Scale and Thirds



Bach Minuet



America, The Beautiful



Question: What do you like about playing music?

Frere Jacques

5

mp

London Bridges Variation

f p f p mf pp

Blues Jam

7

f pp

Practice Record

GROUP 4

A Major Scale with Thirds

1

Musical notation for 'A Major Scale with Thirds' in treble clef, key of A major (two sharps), and common time. The piece consists of two lines of music. The first line starts with a first ending bracket and ends with a repeat sign. The second line continues the scale and ends with a final double bar line.

Simple Gifts

2

Musical notation for 'Simple Gifts' in treble clef, key of A major, and common time. The piece consists of four lines of music. The first line starts with a first ending bracket and is marked *mf*. The second line is marked *f*. The third and fourth lines continue the melody with various dynamics and phrasing.

Hava Nagila

3

Musical notation for 'Hava Nagila' in treble clef, key of A major, and common time. The piece consists of four lines of music. The first line is marked *mp* and includes first and second endings. The second line is marked *mf* and includes first and second endings. The third line is marked *f*. The fourth line is marked *ff*. The piece concludes with a final double bar line.

Rhosymedre

Musical notation for 'Rhosymedre' in 4/4 time, key of B-flat major. The piece consists of two staves of music. The first staff begins with a treble clef, a key signature of two flats (B-flat and E-flat), and a common time signature (C). The melody is written in a single line with a treble clef. The second staff continues the melody. The piece ends with a double bar line.

6/8 Scale Study

Musical notation for '6/8 Scale Study' in 6/8 time, key of B-flat major. The piece consists of two staves of music. The first staff begins with a treble clef, a key signature of two flats (B-flat and E-flat), and a 6/8 time signature. The melody is written in a single line with a treble clef. The second staff continues the melody. The piece ends with a double bar line.

Syncopated Scale Study

Musical notation for 'Syncopated Scale Study' in 4/4 time, key of B-flat major. The piece consists of two staves of music. The first staff begins with a treble clef, a key signature of two flats (B-flat and E-flat), and a common time signature (C). The melody is written in a single line with a treble clef. The second staff continues the melody. The piece ends with a double bar line.

Da Blues

Musical notation for 'Da Blues' in 4/4 time, key of B-flat major. The piece consists of one staff of music. The staff begins with a treble clef, a key signature of two flats (B-flat and E-flat), and a common time signature (C). The melody is written in a single line with a treble clef. The piece ends with a double bar line.

Practice Record

For creativity: Pick one of these pieces and see how many different ways you can play it (tempo, dynamics, articulation, style, etc.).

GROUP 10

Scale Buster

1

f

Musical notation for 'Scale Buster' in treble clef, key of D major (one sharp), and 6/8 time. The piece consists of a single melodic line starting with a forte (*f*) dynamic. The melody is a continuous eighth-note scale: D4-E4-F4-G4-A4-B4-C5-D5-E5-F5-G5-A5-B5-C6-D6-E6-F6-G6-A6-B6-C7.

The Ride of the Valkyries

Richard Wagner

2

f

Musical notation for 'The Ride of the Valkyries' in treble clef, key of D major (one sharp), and 3/8 time. The piece consists of four staves of music. The first staff begins with a forte (*f*) dynamic. The melody is a rhythmic eighth-note pattern: D4-E4-F4-G4-A4-B4-C5-D5-E5-F5-G5-A5-B5-C6-D6-E6-F6-G6-A6-B6-C7. The notation includes various articulations such as accents and slurs.

Sailing, Sailing

3

mf

Musical notation for 'Sailing, Sailing' in treble clef, key of D major (one sharp), and 6/8 time. The piece consists of two staves of music. The first staff begins with a mezzo-forte (*mf*) dynamic. The melody is a rhythmic eighth-note pattern: D4-E4-F4-G4-A4-B4-C5-D5-E5-F5-G5-A5-B5-C6-D6-E6-F6-G6-A6-B6-C7. The notation includes various articulations such as accents and slurs.

Question: What question will you ask yourself today?

Come Thou Fount

Musical score for 'Come Thou Fount' in 3/4 time, key of D major. It consists of three staves. The first staff begins with a treble clef, a key signature of one sharp (F#), and a 3/4 time signature. The music starts with a dynamic marking of *mf*. The second staff continues the melody and includes a dynamic marking of *f*. The third staff concludes the piece with a *mf* dynamic marking and a fermata over the final note.

Vive la Canadienne

Musical score for 'Vive la Canadienne' in 2/4 time, key of B-flat major. It consists of four staves. The first staff is marked 'Allegro' and *mf*. The music features a rhythmic pattern of eighth and sixteenth notes. The second and third staves continue the melody with various articulations like accents and slurs. The fourth staff concludes the piece.

Triple Blue

Musical score for 'Triple Blue' in common time (C), key of C major. It consists of a single staff with a treble clef and a 'swing' feel. The piece features a series of triplet eighth notes, indicated by brackets and the number '3' above the notes.

Practice Record
